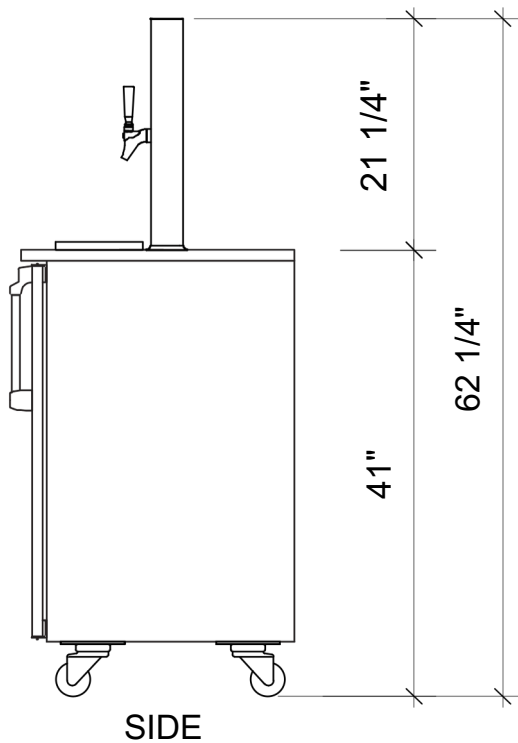
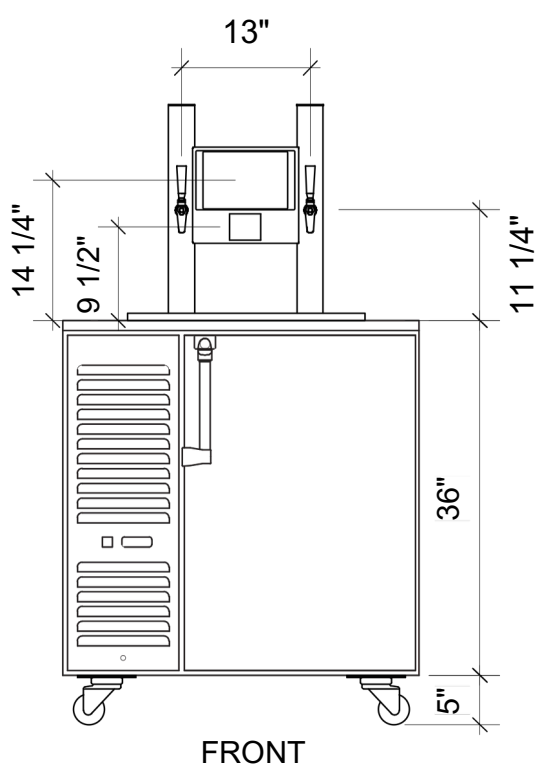
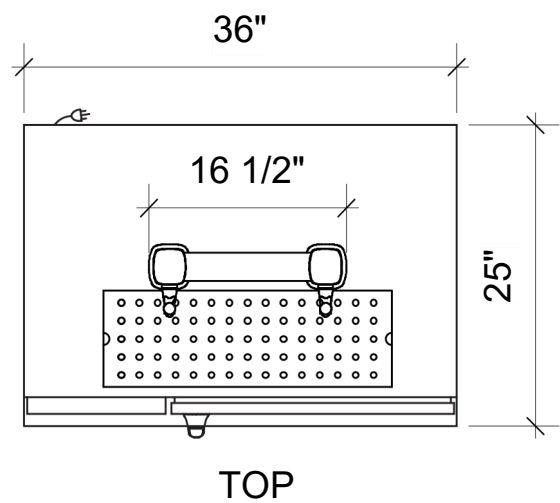
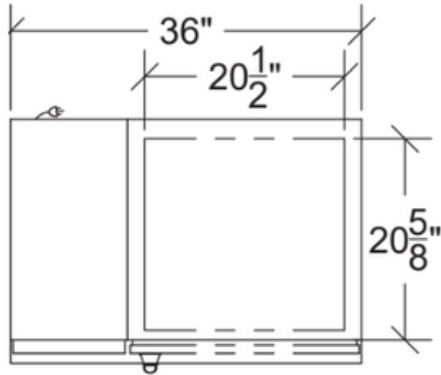


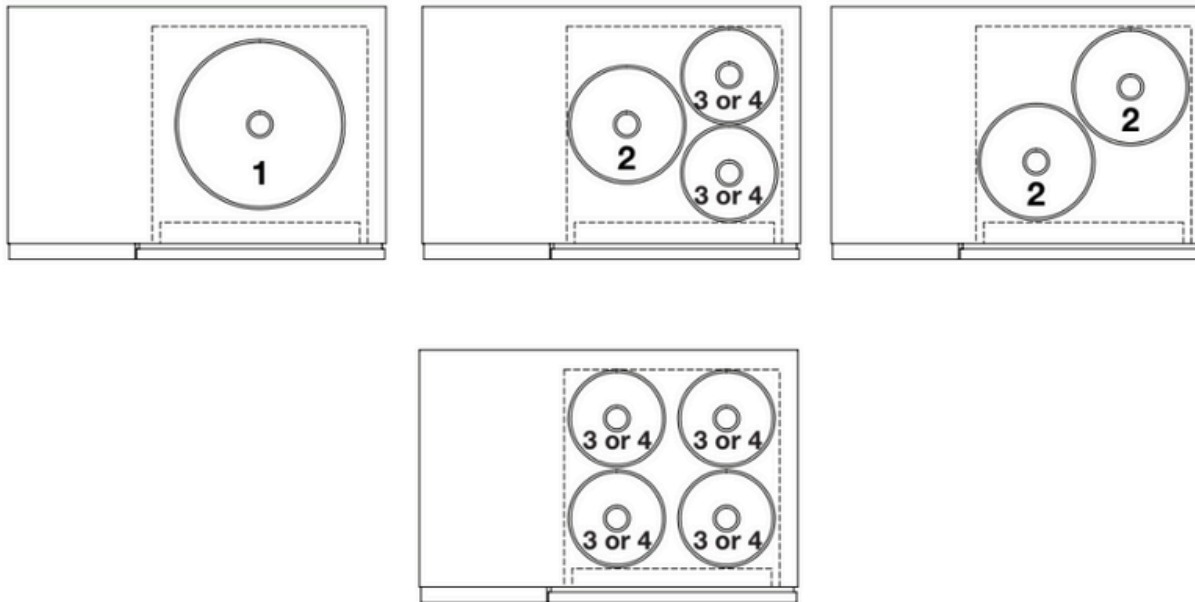
# 2-Tap Self-Pour Station Specs



# 2-Tap Self-Pour Station Keg Capacity



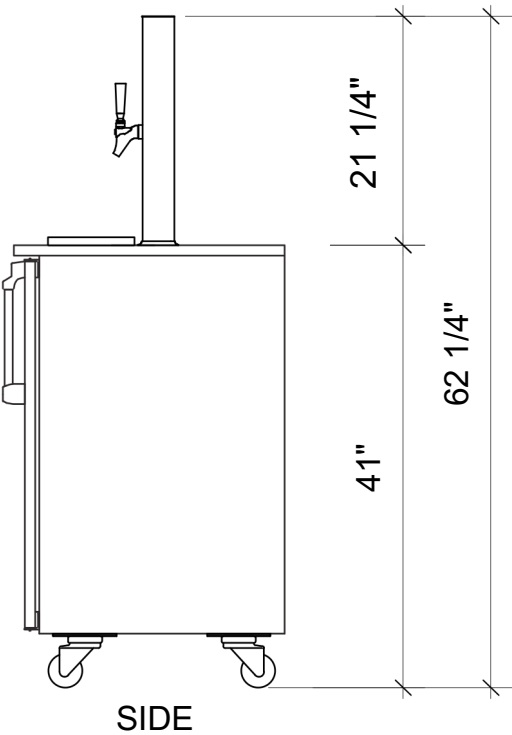
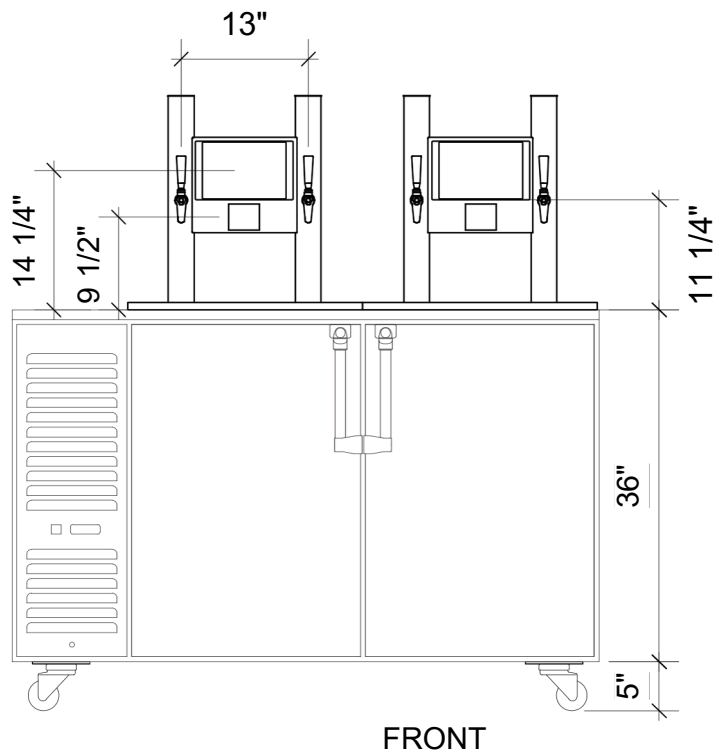
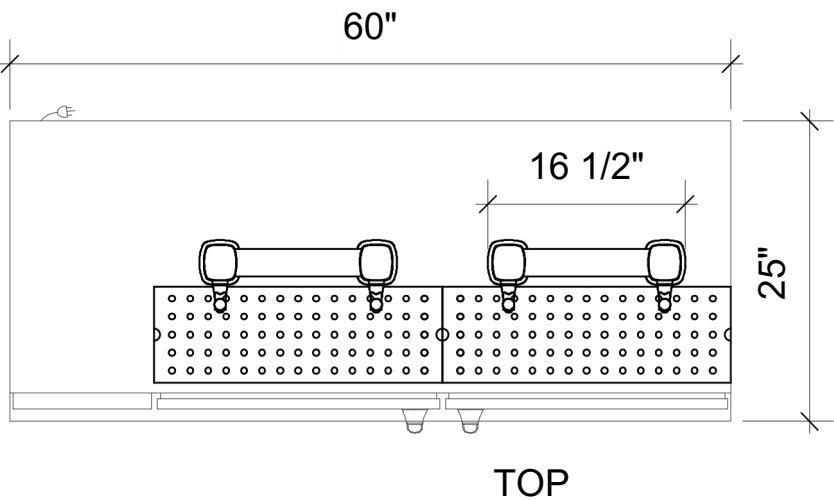
20" x 20-5/8" Inside Cabinet



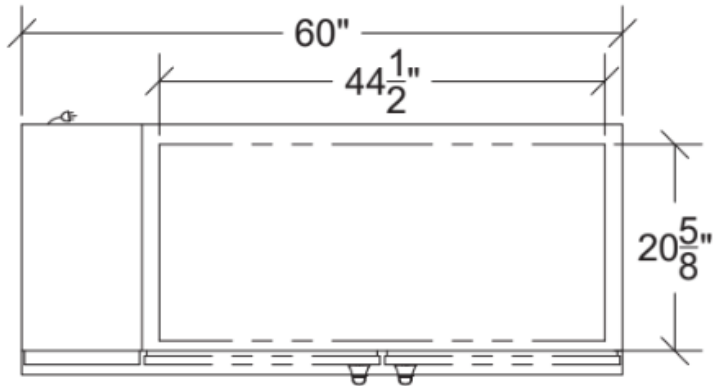
## Keg Guide

- 1 = Typical Half Barrel
- 2 = Typical Quarter Barrel
- 3 = Typical Sixth Barrel
- 4 = Typical Corny Keg

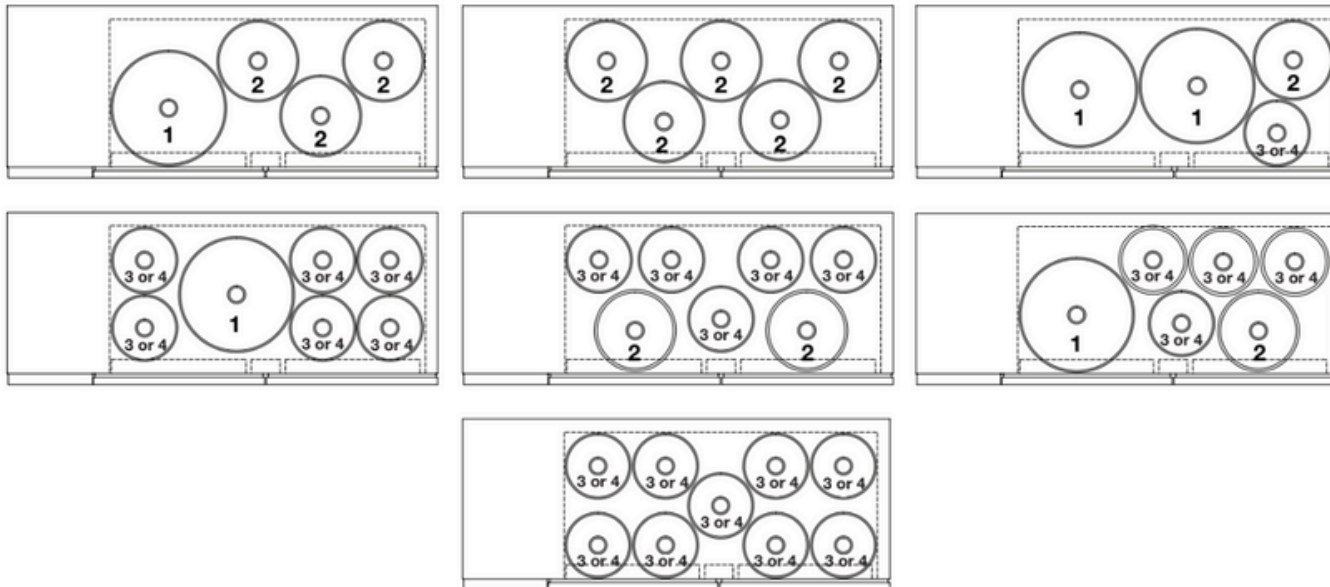
# 4-Tap Self-Pour Station Specs



# 4-Tap Self-Pour Station Keg Capacity



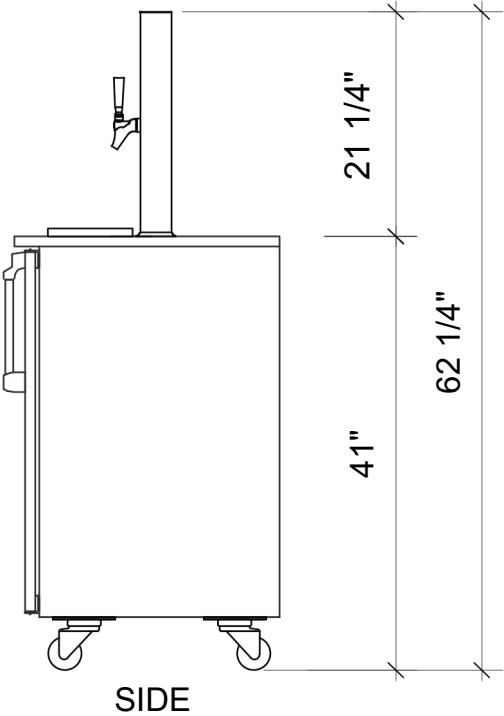
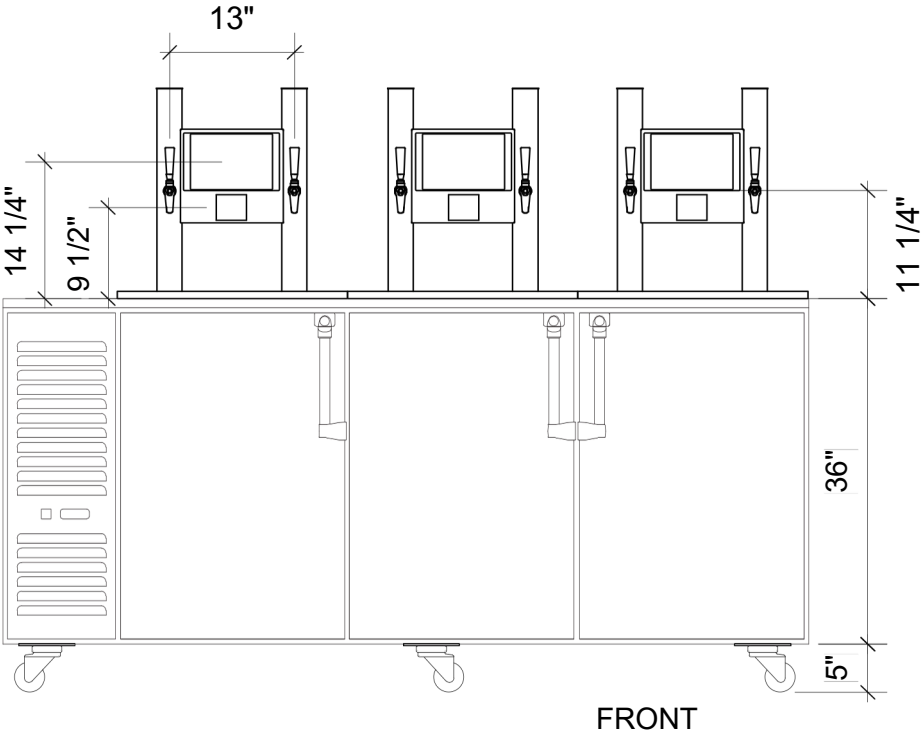
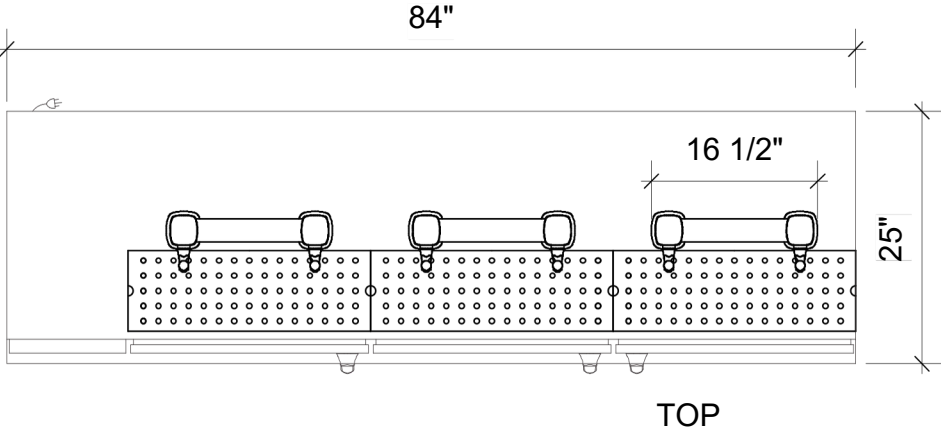
44-1/2" x 20-5/8" Inside Cabinet



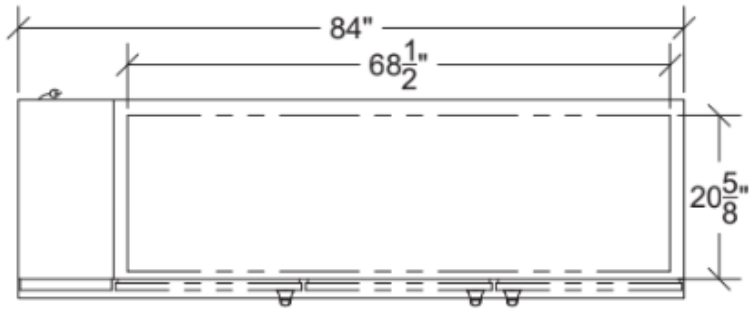
## Keg Guide

- 1 = Typical Half Barrel
- 2 = Typical Quarter Barrel
- 3 = Typical Sixth Barrel
- 4 = Typical Corny Keg

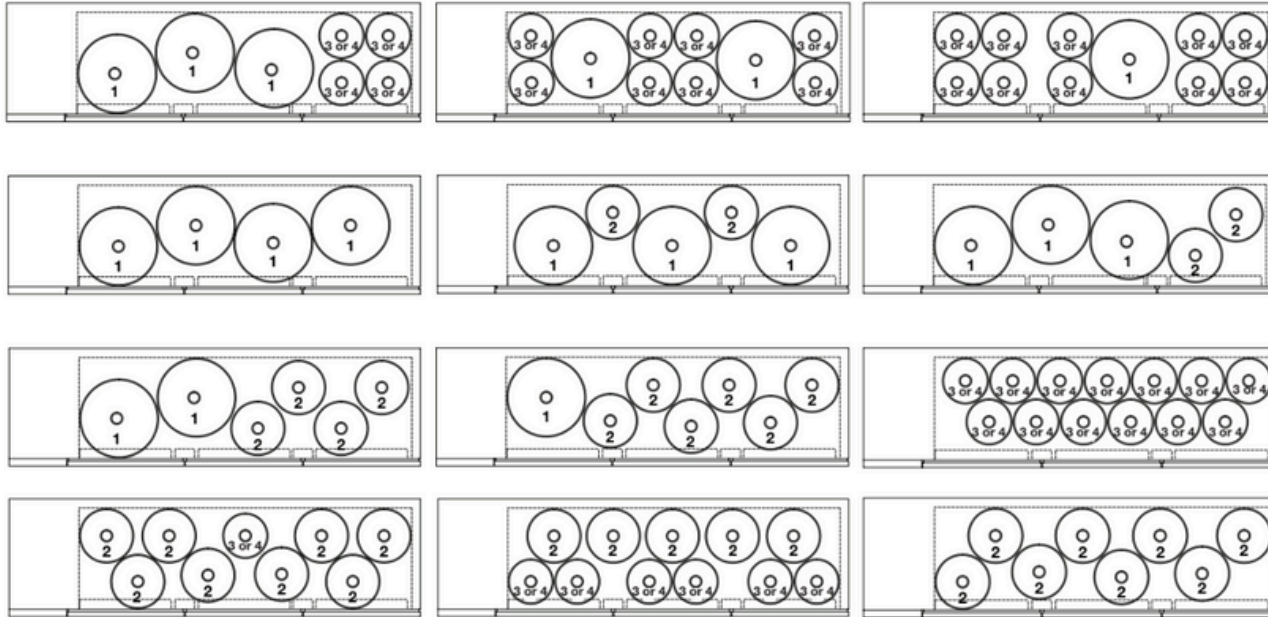
# 6-Tap Self-Pour Station Specs



# 6-Tap Self-Pour Station Keg Capacity



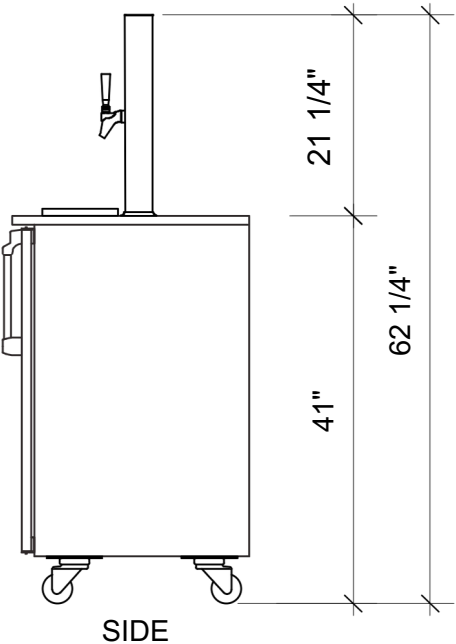
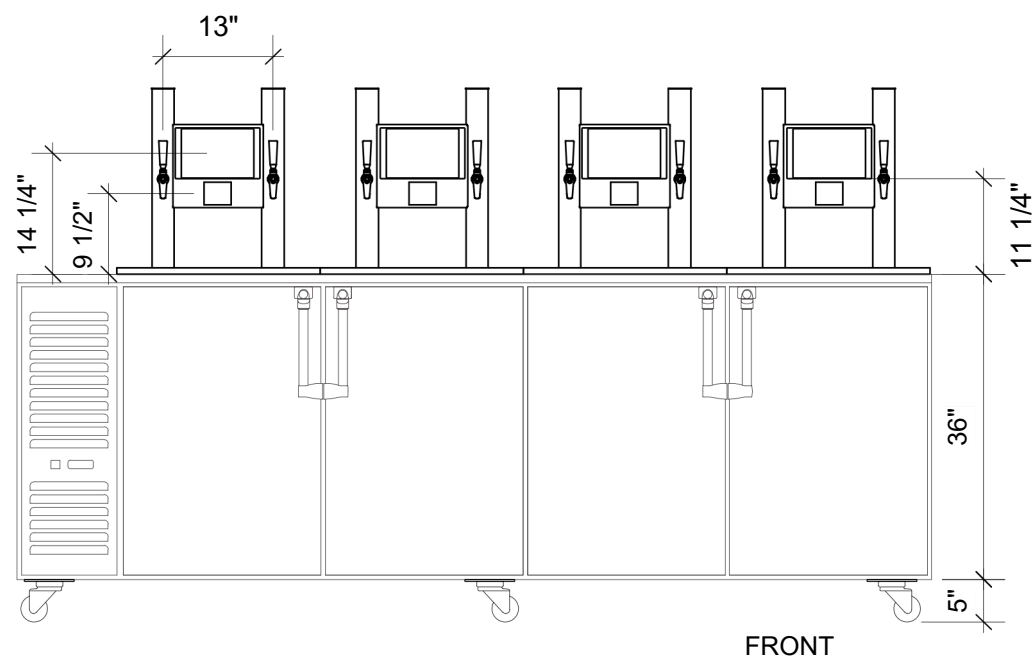
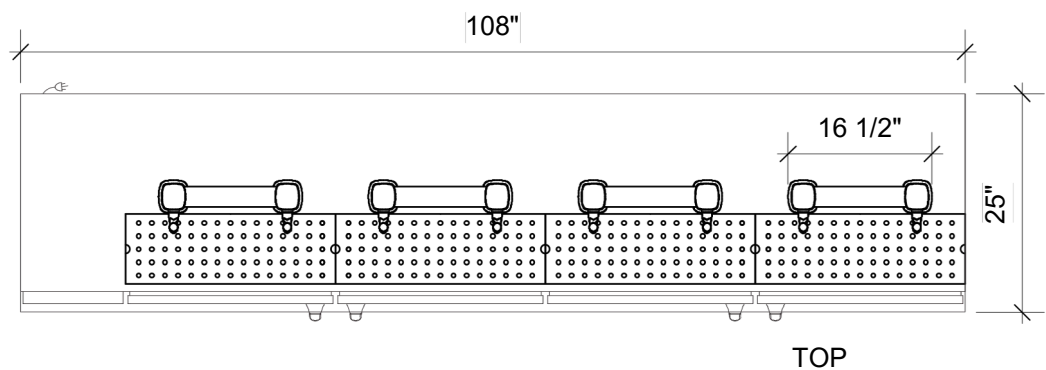
68-1/2" x 20-5/8" Inside Cabinet



## Keg Guide

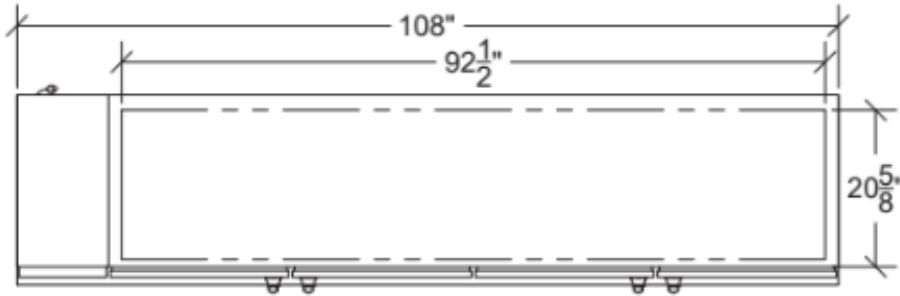
- 1 = Typical Half Barrel
- 2 = Typical Quarter Barrel
- 3 = Typical Sixth Barrel
- 4 = Typical Corny Keg

# 8-Tap Self-Pour Station Specs

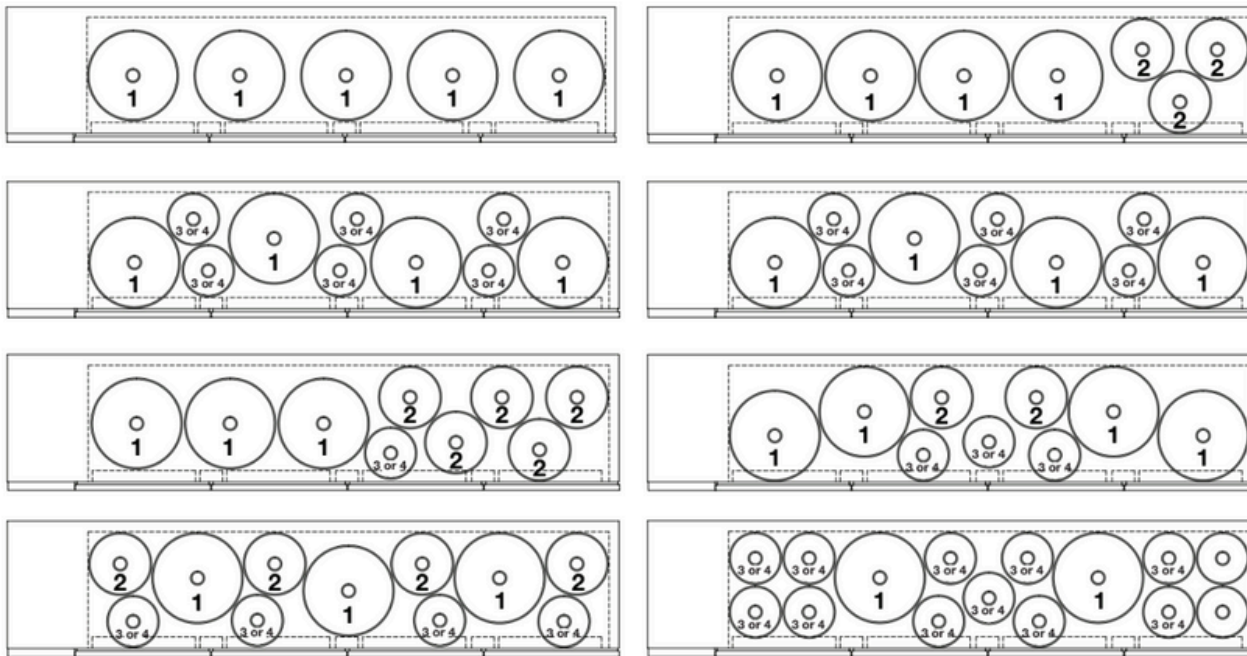




# 8-Tap Self-Pour Station Keg Capacity



92-1/2" x 20-5/8" Inside Cabinet



## Keg Guide

- 1 = Typical Half Barrel
- 2 = Typical Quarter Barrel
- 3 = Typical Sixth Barrel
- 4 = Typical Corny Keg